

# Low Pass Filter

# WGLL-01700

50Ω DC to 1700 MHz

Ver. B  
2023.07.03

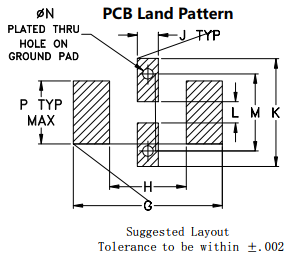
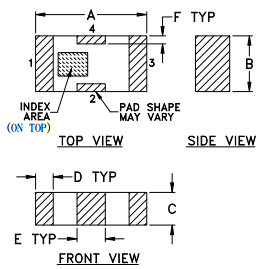
## Maximum Rating

Operating Temperature	-55°C~+100°C
Storage Temperature	-55°C~+100°C
RF Input Power	8W max at 25°C

## Pin Connections

RF Input	1
RF Output	3
Ground	2,4

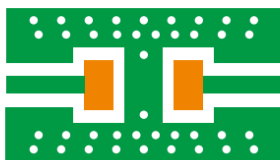
## Outline Drawing



## Outline Dimensions (Tolerance) mm

A	B	C	D	E	F	G
3.20	1.60	0.95	0.51	0.81	0.23	4.29
±0.2	±0.2	±0.2	±0.1	±0.1	±0.1	
H	J	K	L	M	N	P
2.21	0.61	3.10	0.61	2.21	0.30	1.8
						wt
						.020

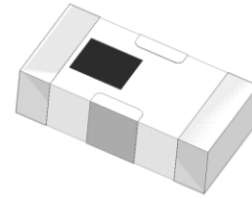
## Demo Board MCL P/N: T-39 Suggested PCB Layout (PL-137)



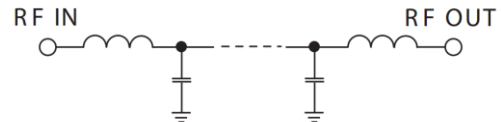
- NOTES:
- COPLANAR WAVEGUIDE PARAMETERS ARE SHOWN FOR ROGERS RO4350 WITH THICKNESS .508" ± .0015". COPPER: 1/2 OZ. EACH SIDE. FOR OTHER MATERIALS TRACE WIDTH & GAP MAY NEED TO BE MODIFIED.
  - BOTTOM SIDE OF THE PCB IS CONTINUOUS GROUND PLANE. DENOTES PCB COPPER LAYOUT WITH SMOBC (SOLDER MASK OVER BARE COPPER)
  - DENOTES COPPER LAND PATTERN FREE OF SOLDER MASK

## Features

- High Performance
- Small Size
- Wide Band
- Ultra Low I.L.
- Temperature Stable
- LTCC Structure



RoHS Compliant



## Functional Schematic

## Application

- Harmonic Rejection
- Transmitters/Receivers
- Lab Use

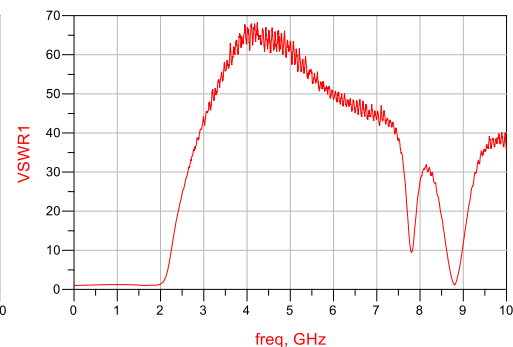
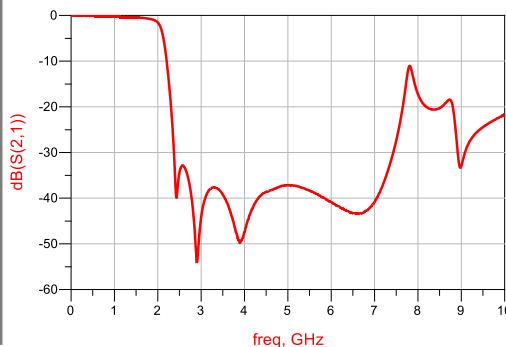
## Electrical Specifications<sup>(1)</sup> at 25°C

Parameter		Frequency (MHz)	MIN	Typ.	MAX	Unit
Pass Band	Insertion Loss	DC-1700	-	1.0	1.3	dB
	Freq. Cut-off	2075	-	3.0	-	dB
	VSWR	DC-1700	-	1.2	1.5	:1
Stop Band	Rejection Loss	2375	20	30	-	dB
		2500-6500	30	35	-	dB

(1) Test on our Demo Board.

## Typical Performance at 25°C

Frequency (MHz)	Insertion Loss (dB)	VSWR (:1)
100	0.07	1.03
1000	0.36	1.25
1500	0.52	1.12
1800	0.83	1.12
2075	3.00	2.19
2440	39.56	21.46
2582	32.94	27.70
2923	54.18	38.67
3395	37.23	50.16
4173	54.49	66.03
5029	44.96	65.39
6059	62.17	55.21
7512	26.70	33.56
8032	17.94	23.74
9024	26.04	19.60



## Notes:

- The specifications are tested at 25°C±5°C, relative humidity 55~75%.
- Other quality and characteristic not specify in this datasheet. Please contact us for detail requirements.



Well Genius Technology (Shanghai) LTD.

Room 1001, Block C, Hi-Tech Building, No.900 Yi Shan Rd, Shanghai, P.R.C, 200233

Tel: (021) 6495 8888

Fax: (021) 5423 5889

www.wellgenius.com