

# Low Pass Filter

## WGLL-07200-B

50Ω DC to 7200 MHz

Ver. A  
2022.01.17

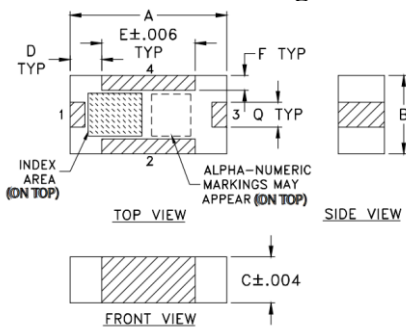
### Maximum Rating

Operating Temperature	-55°C~+100°C
Storage Temperature	-55°C~+100°C
RF Input Power	8W max at 25°C

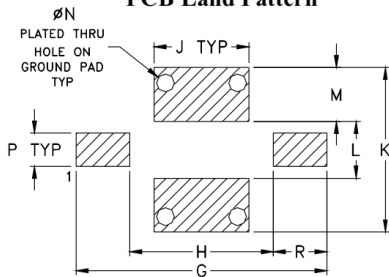
### Pin Connections

RF Input	1
RF Output	3
Ground	2,4

### Outline Drawing



### PCB Land Pattern

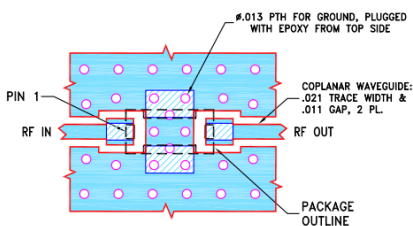


Suggested Layout,  
Tolerance to be within ±002

### Outline Dimensions (inch)

A	B	C	D	E	F	G	H	J
.126	.063	.037	.026	.075	.012	.182	.104	.069
3.20	1.60	0.94	0.66	1.91	0.30	4.62	2.64	1.75
K	L	M	N	P	Q	R	wt	
.119	.041	.039	.013	.024	.020	.039	grams	
3.02	1.04	0.99	0.33	0.61	0.51	0.99	.020	

### Demo Board MCL P/N: T-11 Suggested PCB Layout (PL-137)



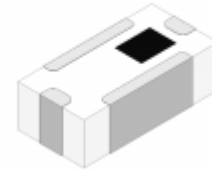
#### NOTES:

1. TRACE WIDTH & GAP PARAMETERS ARE SHOWN FOR ROGERS RO4350B WITH DIELECTRIC THICKNESS .010±.001, COPPER: 1/2 OZ. EACH SIDE. FOR OTHER MATERIALS TRACE WIDTH & GAP MAY NEED TO BE MODIFIED.  
2. BOTTOM SIDE OF THE PCB IS CONTINUOUS GROUND PLANE.

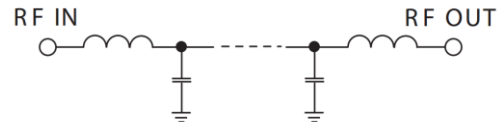
■ DENOTES PCB COPPER LAYOUT WITH SMOBC (SOLDER MASK OVER BARE COPPER).  
■ DENOTES COPPER LAND PATTERN FREE OF SOLDER MASK.

### Features

- High Performance
- Small Size
- Wide Band
- Ultra Low I.L.
- Temperature Stable
- LTCC Structure



RoHS Compliant



### Application

- Harmonic Rejection
- Transmitters/Receivers
- Lab Use

### Functional Schematic

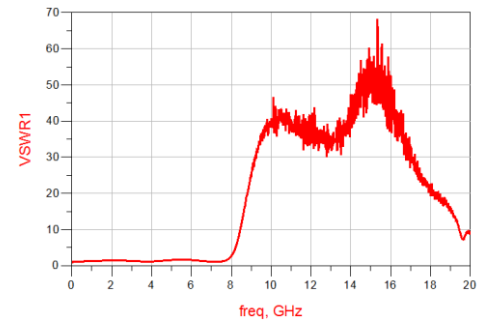
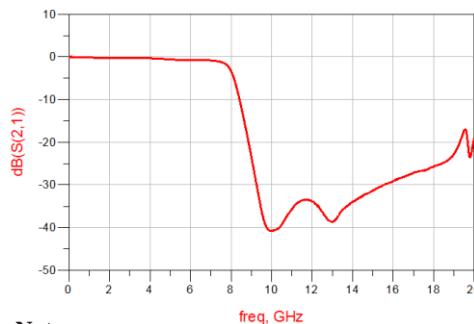
### Electrical Specifications<sup>(1)</sup> at 25°C

Parameter	Frequency (MHz)	MIN	Typ.	MAX	Unit	
Pass Band	Insertion Loss	DC-7200	-	1.0	2.0	dB
	Freq. Cut-off	7970	-	3.0	-	dB
	VSWR	DC-7200	-	1.6	2.0	:1
Stop Band	Rejection Loss	8980	20	30	-	dB
		9270-10060	25	35	-	dB
		15000	20	30	-	dB

(1) Tested on Demo Board.

### Typical Performance at 25°C

Frequency (MHz)	Insertion Loss (dB)	VSWR (:1)
500	0.082	1.111
2000	0.31	1.395
4000	0.337	1.083
5500	0.729	1.611
6000	0.756	1.518
7200	0.942	1.024
7500	1.21	1.097
7970	3.061	2.379
8500	11.77	11.108
8700	16.22	16.47
9270	30.29	31.7.3
10060	40.75	38.52
11000	35.72	40.21
14000	34.03	47.39
15000	31.39	48.38



### Notes

- The specifications are tested at 25°C±5°C, relative humidity 55~75%.
- Other quality and characteristic not specify in this datasheet. Please contact us for detail requirements.



Well Genius Technology (Shanghai) LTD.

Room 1001, Block C, Hi-Tech Building, No.900 Yi Shan Rd, Shanghai, P.R.C, 200233

Tel: (021) 6495 8888

Fax: (021) 5423 5889

www.wellgenius.com