

Low Pass Filter

WGLL-00080

50Ω DC to 80MHz

Ver. A
2018.11.22

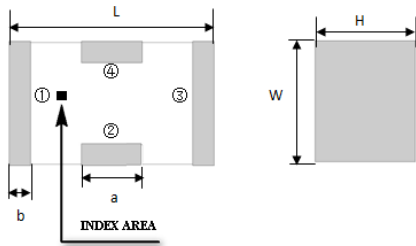
Maximum Rating

Operating Temperature	-55°C~+100°C
Storage Temperature	-55°C~+100°C
RF Input Power	5W max at 25°C

Pin Connections

RF Input	1
RF Output	3
Ground	2,4

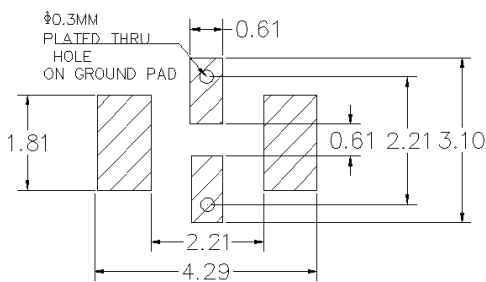
Outline Drawing



Outline Dimension(mm)

W	L	H
1.6±0.2	3.2±0.2	1.0±0.2
a	b	
0.8±0.1	0.5±0.1	

PCB Land Pattern(mm)



SUGGESTED LAYOUT

TOLERANCE TO BE WITHIN ±0.05mm

Features

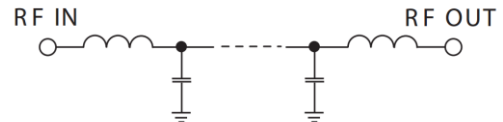
- High Performance
- Small Size
- Wide Band
- Ultra Low I.L.
- Temperature Stable
- LTCC Structure

Application

- Harmonic Rejection
- Transmitters/Receivers
- Lab Use



RoHS Compliant



Functional Schematic

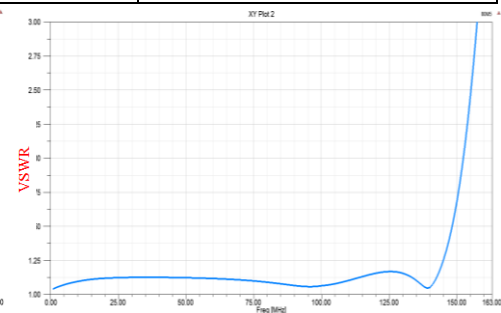
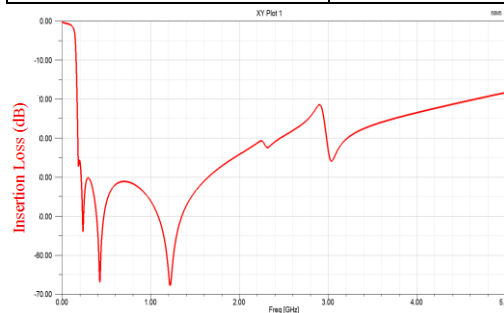
Electrical Specifications⁽¹⁾ at 25°C

Parameter		Frequency (MHz)	MIN	Typ.	MAX	Unit
Pass Band	Insertion Loss	DC-80	-	1.0	1.2	dB
	Freq. Cut-off	145	-	3.0	-	dB
	VSWR	DC-80	-	1.2	1.5	:1
Stop Band	Rejection Loss	200	20	30	-	dB
		225-1550	20	30	-	dB
		4500	15	25	-	dB

(1) Test on our Demo Board.

Typical Performance at 25°C

Frequency (MHz)	Insertion Loss (dB)	VSWR (:1)
10	0.35	1.09
50	0.65	1.12
80	0.84	1.09
140	2.70	1.053
170	20.61	6.84
200	35.67	15.62
225	44.62	22.15
500	46.55	88.14
1000	46.10	145.17
1550	42.26	170.10
2000	34.145	172.43
2500	29.42	146.20
3500	26.69	113.29
4500	20.81	55.64
5000	18.34	35.05



Notes:

- The specifications are tested at 25°C±5°C, relative humidity 55~75%.
- Other quality and characteristic not specify in this datasheet. Please contact us for detail requirements.



Well Genius Technology (Shanghai) LTD.