

Band Pass Filter

WGLB-02595-2012

50Ω 2355 to 2835 MHz

Ver. A
2023.11.28

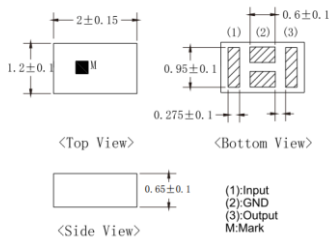
Maximum Rating

Operating Temperature	-40°C~+85°C
Storage Temperature	-55°C~+125°C
RF Input Power	2W max at 25°C

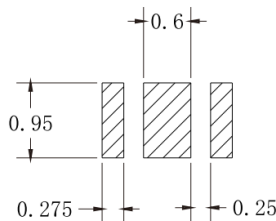
Pin Connections

RF Input	1
RF Output	3
Ground	2

Outline Drawing

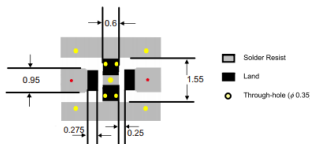


PCB Land Pattern(mm)



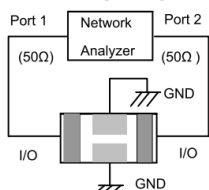
Tolerance to be within ±0.02
Solder Paste: SAC 305 Type is Recommended

Demo Board Suggested PCB Layout



*Line width should be designed to match 50 ohm characteristic impedance, depending on PCB material and thickness

Measuring Diagram

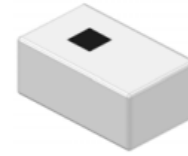


Features

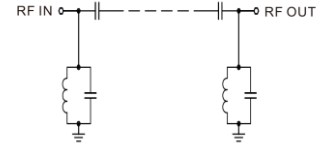
- High Performance
- Small Size
- Wide Band
- Ultra Low I.L.
- Temperature Stable
- LTCC Structure

Application

- Harmonic Rejection
- Transmitters/Receivers
- Lab Use



RoHS Compliant



Functional Schematic

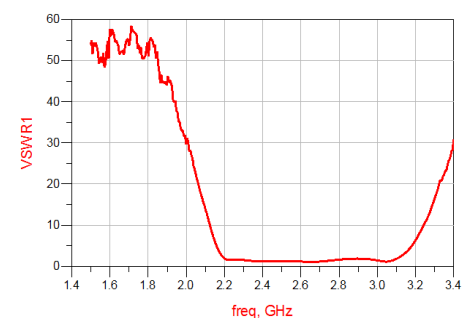
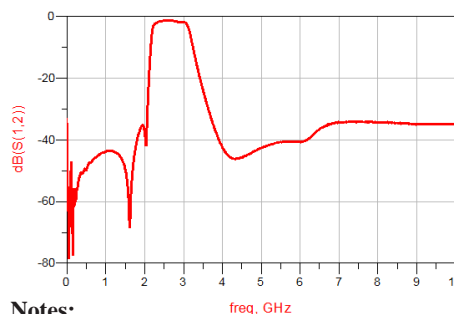
Electrical Specifications⁽¹⁾ at 25°C

Parameter		Frequency (MHz)	MIN	Typ.	MAX	Unit
Pass Band	Center Frequency	-	-	2595	-	MHz
	Insertion Loss	2355-2835	-	2.1	3.0	dB
	VSWR	2355-2835	-	1.8	2.0	:1
Stop Band	Rejection Loss	500-2000	16	25	-	dB
		2125	12	20	-	dB
		3400	10	20	-	dB
		6000-7500	20	35	-	dB

(1) Test on our Demo Board.

Typical Performance at 25°C

Frequency (MHz)	Insertion Loss (dB)	VSWR (:1)
500	49.71	49.9
1000	43.77	48.19
2355	1.662	1.256
2496	1.349	1.297
2593	1.26	1.189
2835	1.627	1.74
3400	18.99	30.48
3800	36.51	53.34
4000	42.26	46.4
5000	42.64	15.67
5100	42.05	13.87
6000	40.63	3.36
7000	34.45	17.66
8000	34.31	48.19
9000	34.95	42.98



Notes:

- The specifications are tested at 25°C±5°C, relative humidity 55~75%.
- Other quality and characteristic not specify in this datasheet. Please contact us for detail requirements.



Well Genius Technology (Shanghai) LTD.