

# Band Pass Filter

WGLB-03750-2012

50Ω 3300 to 4200 MHz

Ver. A  
2022.07.08

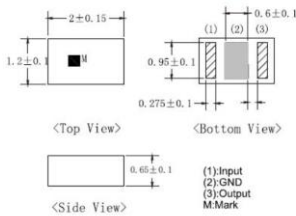
## Maximum Rating

Operating Temperature	-40°C~+85°C
Storage Temperature	-55°C~+125°C
RF Input Power	2W max at 25°C

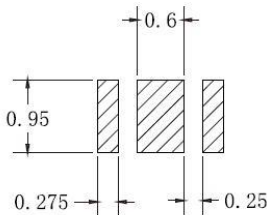
## Pin Connections

RF Input	1
RF Output	3
Ground	2

## Outline Drawing

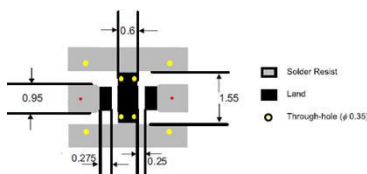


## PCB Land Pattern(mm)



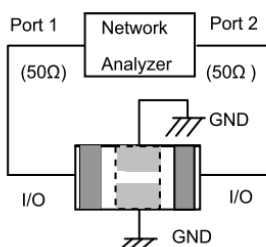
Tolerance to be within ±0.02  
Solder Paste: SAC 305 Type is Recommended

## Suggested PCB Layout



\*Line width should be designed to match 50 ohm characteristic impedance, depending on PCB material and thickness

## Measuring Diagram

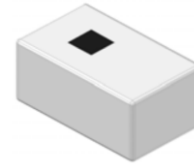


## Features

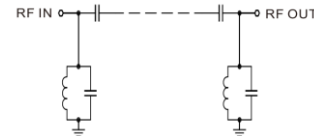
- High Performance
- Small Size
- Wide Band
- Ultra Low I.L.
- Temperature Stable
- LTCC Structure

## Application

- Harmonic Rejection
- Transmitters/Receivers
- Lab Use



RoHS Compliant



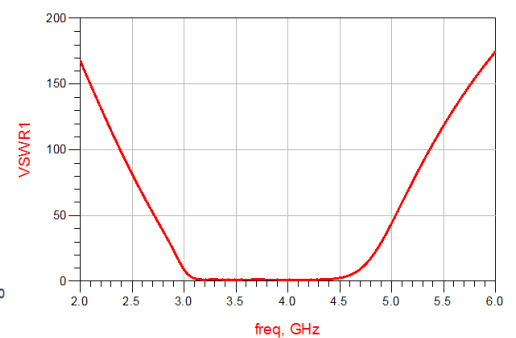
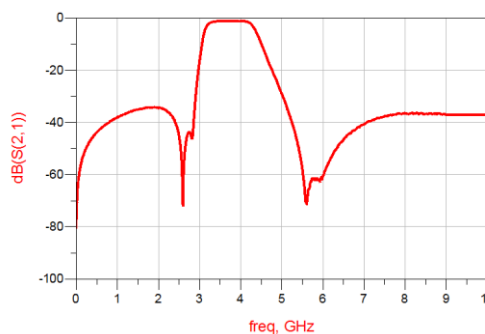
Functional Schematic

Parameter		Frequency (MHz)	MIN	Typ.	MAX	Unit
Pass Band	Center Frequency	-	-	3750	-	MHz
	Insertion Loss	3300-4200	-	1.7	2.0	dB
	VSWR	3300-4200	-	1.7	2.0	:1
Stop Band	Rejection Loss	100-2570	30	35	-	dB
		2620-2690	20	31	-	dB
		5150-5925	15	25	-	dB
		6600-8100	25	28	-	dB
		9000-10000	15	25	-	dB

(1) Test on our Demo Board at 25°C

## Typical Performance at 25°C

Frequency (MHz)	Insertion Loss (dB)	VSWR (:1)
1000	38.29	257.68
2170	35.24	85.80
2500	45.4	52.66
3340	1.39	1.03
3750	1.12	1.09
4200	1.69	1.13
4500	9.86	7.45
5000	29.19	49.50
5500	58.07	101.39
6000	60.92	150.85
7000	40.75	215.48
8000	36.67	246.18
8500	36.63	256.76
9000	37.10	265.8
10000	37.10	275.7



## Notes:

- The specifications are tested at 25°C±5°C, relative humidity 55~75%.
- Other quality and characteristic not specify in this datasheet. Please contact us for detail requirements.



Well Genius Technology (Shanghai) LTD.