

Low Pass Filter

WGLL-01000-2012

50Ω DC to 1000 MHz

Ver. A
2021.08.07

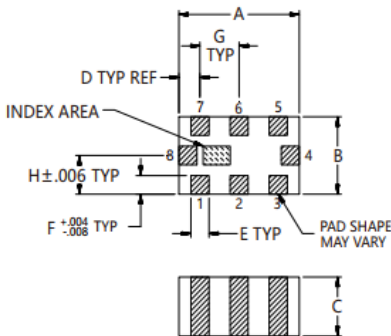
Maximum Rating

Operating Temperature	-55°C~+125°C
Storage Temperature	-55°C~+125°C
RF Input Power	5.5W max at 25°C

Pin Connections

RF Input	8
RF Output	4
Ground	1,2,3,5,6,7

Outline Drawing

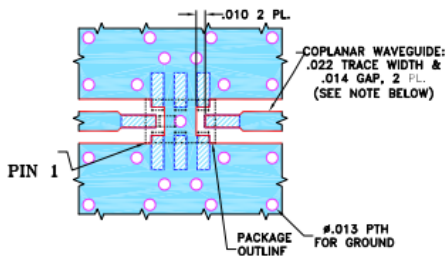


Outline Dimensions (inch)

A	B	C	D	E	F	G	Wt.
.079	.049	.037	.014	.012	.012	.026	grams
2.00	1.25	0.95	0.35	0.30	0.30	0.65	.008

Note: Please refer to case style drawing for details

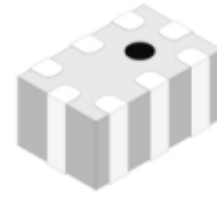
Demo Board MCL P/N: CG-2012 Suggested PCB Layout



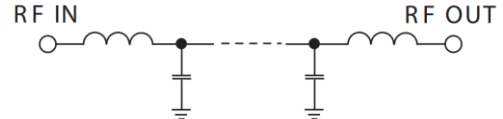
- NOTES:
1. COPLANAR WAVEGUIDE IS SHOWN FOR ROGERS RO4350B WITH DIELECTRIC THICKNESS .010" ± .001". COPPER: 1/2 OZ. EACH SIDE. FOR OTHER MATERIALS TRACE WIDTH AND GAP MAY NEED TO BE MODIFIED.
 2. BOTTOM SIDE OF THE PCB IS CONTINUOUS GROUND PLANE.
- DENOTES PCB COPPER LAYOUT WITH SMOBC (SOLDER MASK OVER BARE COPPER).
■ DENOTES COPPER LAND PATTERN FREE OF SOLDER MASK.

Features

- High Performance
- Small Size
- Wide Band
- Ultra Low I.L.
- Temperature Stable
- LTCC Structure



RoHS Compliant



Functional Schematic

Application

- Harmonic Rejection
- Transmitters/Receivers
- Lab Use

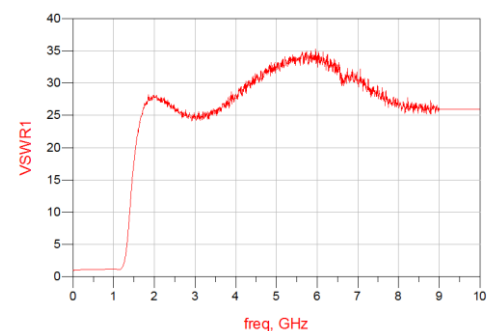
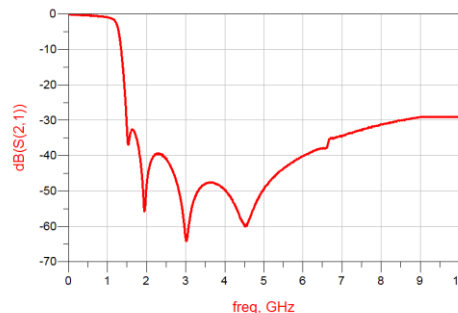
Electrical Specifications⁽¹⁾ at 25°C

Parameter		Frequency (MHz)	MIN	Typ.	MAX	Unit
Pass Band	Insertion Loss	DC-1000	-	0.9	1.8	dB
	Freq. Cut-off	1240	-	3.0	-	dB
	VSWR	DC-1000	-	1.2	1.5	:1
Stop Band	Rejection Loss	1550-1900	20	-	-	dB
		1900-3000	30	35	-	dB
		3000-6000	25	30	-	dB
		6000-10000	20	30	-	dB

(1) Tested on Demo Board.

Typical Performance at 25°C

Frequency (MHz)	Insertion Loss (dB)	VSWR (:1)
50	0.109	1.03
500	0.382	1.13
1000	0.29	1.19
1200	2.105	1.37
1500	33.57	17.81
1750	35.42	26.60
2000	48.14	27.87
2500	40.93	25.85
3000	63.68	24.62
3500	47.80	25.80
4500	59.73	30.92
5000	49.43	32.49
6050	39.89	33.54
6500	37.88	32.12
7000	34.45	30.27



Notes

- The specifications are tested at 25°C±5°C, relative humidity 55~75%.
- Other quality and characteristic not specify in this datasheet. Please contact us for detail requirements.



Well Genius Technology (Shanghai) LTD.

Room 1001, Block C, Hi-Tech Building, No.900 Yi Shan Rd, Shanghai, P.R.C, 200233

Tel: (021) 6495 8888

Fax: (021) 5423 5889

www.wellgenius.com